

THE SIXTEENTH SUNDAY OF ORDINARY TIME

Optimam partem elegit sibi Maria,
quae non auferetur ab ea in aeternum.

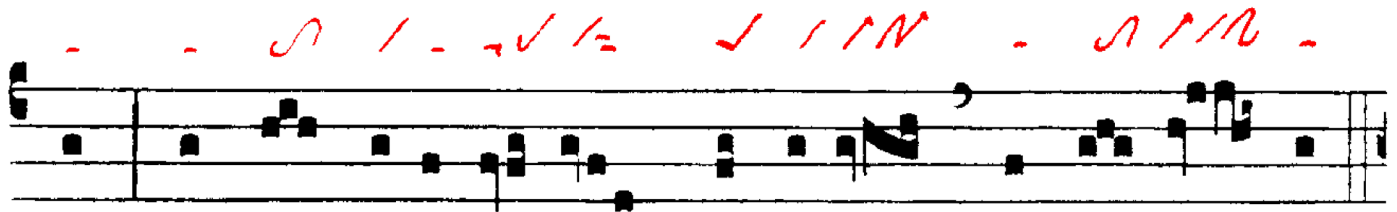
*Mary has chosen for herself the best portion,
which shall never be taken away from her.*

VIII

O



- ptimam par- tem e-lé- git si-bi Ma-rí-
Best part she-has-chosen for-herself Mary



a, quae non aufe-ré- tur ab e- a in ae- tér- num.
which not it-will-be-carried-away from her unto everlasting.

- Luke 10:42

© Anton Stingl jun.

